






# CL 1010 Time

Electronic driver's logbook



-  GPS-supported **electronic collection of driver's logbook data** throughout Europe, management programme for analysis on your computer included
-  **Danger zone warning system**<sup>1</sup> – prompt acoustic warning of danger zones via SCDB data
-  Recording of ignition on/off data log and with that **extremely precise logbook keeping**
-  **Map material** for visualization of routes driven
-  **Rapid and straightforward creation of drivers' logbooks** that fulfil the requirements of the German tax authorities<sup>2</sup>

<sup>1</sup>Not activated when delivered, function can be activated by the customer.

<sup>2</sup>Fulfils the legal requirements in the Federal Republic of Germany. In other countries the legal situation may differ.

Save on taxes when driving  
when driving

# CL 1010 Time

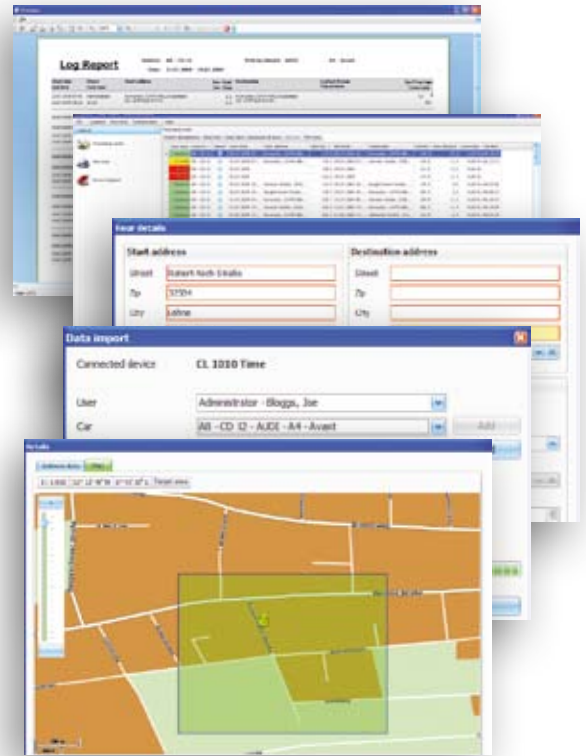
in detail

## Device



- Stored data: **date and time, vehicle position, speed**
- Driver's log data storage capacity for **10,000 kilometres or 3 months**
- Changeover route options between **Private, Commute to work and Business Trip modes** (no recording of position in private mode)
- **Status display** of whether GPS-reception is available and of mode of operation using two different diodes (green and red)
- Mini USB connection for **comfortable read-out of data**

## Administrative programme **BURY Time Suite**

- **Automatic allocation of address** details for the highlighted GPS coordinates
- Input of missing address data and purpose of journey, with **additional information such as business partners**
- **Updating of data** possible for **danger zone warning system** (SCDB data)
- **Geo-fencing** – automatic assigning of pre-defined address data to a geographically larger starting or destination area



**BURY Time Suite**

Technical Data CL 1010 Time	
External dimensions	55 x 44 x 12 mm
Operating voltage	10-30 V
Quiescent current	< 1 mA
Working current	Car < 60 mA, Lorry < 40 mA
USB port	Mini-USB 2.0
GPS module	MTK
GPS antenna	Type Patch
Temperature range	-40 - +85 °C
Languages (administrative programme)	DE, GB, PL, NL
Technical requirements for the administrative programme	
Processor	Intel Pentium (or equivalent) with 1.5 GHz
Operating system	Windows XP with Service Pack 2 or higher. NET 3.5 Service Pack 1 (supplied on DVD)
Database	Firebird SQL 2.1 (supplied on DVD)
Working memory	at least 512 MB
Hard disk drive	at least 3 GB
Screen resolution	at least 1024x768 pixels
USB interface	existing
DVD drive	existing
Accreditations	
	CL 1010 Time meets the requirements of the EU-Directive 1999/5/EC (R&TTE Directive)
	Technical type approval according to 72/245/EEC (2006/28/EC) „Electromagnetic Compatibility in motor vehicles“



50-02-0359-3 - 01 2010-08-02 Subject to alterations and errors excepted. All of the brands and/or brand names stated here are owned by the corresponding legal rights owners.